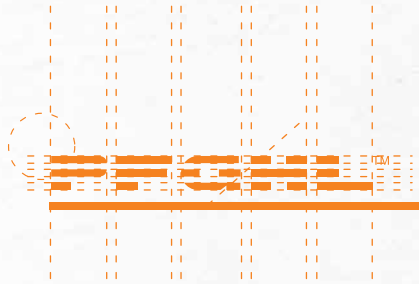




PROFITS FUND COSTING LOOK BOOK





CONTENTS

02-03 Benefit

WOMENSWEAR

04-05 Ladies Section
06-07 Woven Skirt
08-09 Woven Dress
10-11 Woven Tops/Blouse
12-13 C&S Tee
14-15 Woven Coat
16-17 Woven Pants

MENSWEAR

18-19 Mens section
20-21 Woven Shirt
22-23 Woven Trousers
24-25 Woven Jacket/Coat
26-27 C&S T-Shirt/Polo Shirt
28-29 Contact Us



BENEFIT

THE EVIDENT BENEFIT

Our new factory in Nanchong allows our clients to enjoy the 5IVE competitive benefits and also lower their production costs, yet maintain a high quality end product. Overall it provides a higher degree of flexibility to the whole production process.

These benefits enable our clients to significantly lower direct labor cost and therefore product unit cost, eventually enjoying CM savings and competitive FOB price.

It is the right choice to produce your product in Nanchong!



66



■ Flexibility ■ Labor Cost
■ Time Cost ■ Hidden Cost

99

THE FIVE MAJOR BENEFITS



66

Enjoy Our Evident Benefit

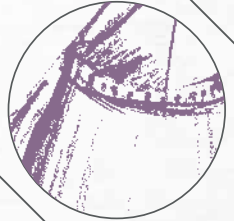
99



LADIES

- WOVEN PANTS
- WOVEN SKIRT
- C&S TEE
- WOVEN COAT
- Woven Tops/Blouse
- WOVEN DRESS

Woven Ladies' Pencil Skirt



FABRIC

95% Cotton, 5% Spandex,
Stretch Twill 250g/m²

DESCRIPTION

Ladies' Pencil Skirt with
Fully Lining

CONSTRUCTION

Overlock Stitch, Left Side Seam,
Zipper Closure, Bottom Tape, No Pocket

TRIM

Main/Size/ID/Care Label,
Invisible Zipper, Plastic Button

WOVEN SKIRTS

**DIRECT
LABOR
COST**

**LESS
30%**

**TOTAL
SAVING %**

Coastline

NanChong

28%



Woven Ladies' Skirt



FABRIC

100% Viscose, Crepe 190g/m²

DESCRIPTION

Ladies' Skirt

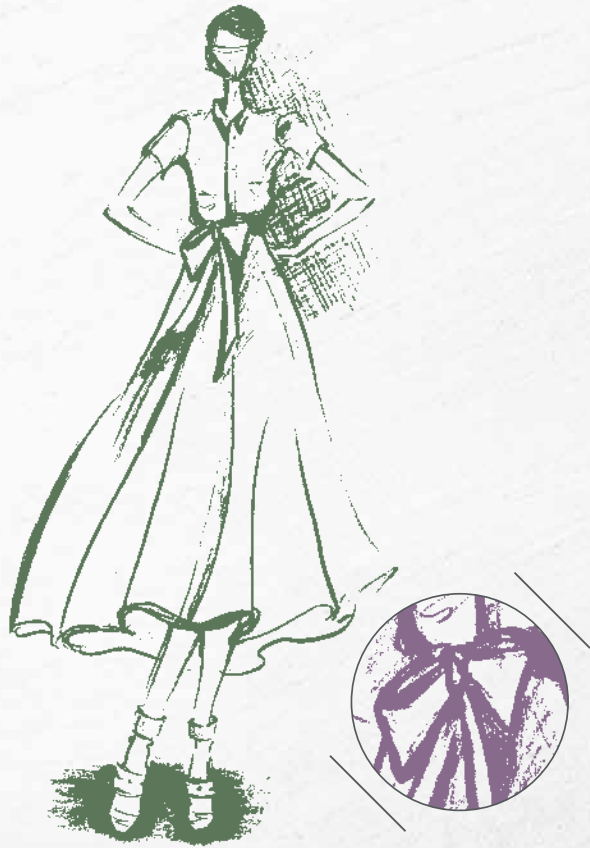
CONSTRUCTION

Overlock Stitch, Elastic Wasitband

TRIM

Main/Size/ID/Care Label,
1/2" Elastic

Woven Ladies' Dress



FABRIC

98% Cotton, 2% Spandex,
Poplin 121 g/m²

DESCRIPTION

Ladies' Shirt Dress

CONSTRUCTION

Overlock Stitch, Center Front with
Fourteen Button Closure

TRIM

Main/Size/ID/Care Label,
Plastic Button

WOMEN DRESSES

**DIRECT
LABOR
COST**

**LESS
32%**

**TOTAL
SAVING %**

Coastline

NanChong

25%



Woven Ladies' Dress



FABRIC

98% Cotton, 2% Spandex,
Poplin 121 g/m²

DESCRIPTION

Ladies' Short Sleeves Dress

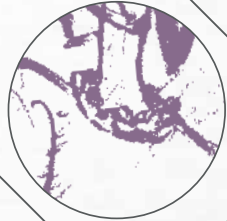
CONSTRUCTION

Overlock Stitch, Invisible Zipper,
Left Side Seam Closure

TRIM

Main/Size/ID/Care Label,
Invisible Zipper

Woven Ladies' Top



FABRIC

100% Viscose, Crepe 190g/m²

DESCRIPTION

Ladies' Ruffle Neck Tops

CONSTRUCTION

Overlock Stitch, Back Neck with One Button Closure

TRIM

Main/Size/ID/Care Label, Plastic Button

WOVEN TOPS/ BLOUSE

DIRECT LABOR COST

LESS 30%

TOTAL SAVING %

Coastline

NanChong

28%



Woven Ladies' Blouse



FABRIC

100% Cotton, Poplin 4oz

DESCRIPTION

Ladies' Long Sleeves Blouse

CONSTRUCTION

French Seam, Cuffs with Four Button Closure, Center Front with Eight Button Closure

TRIM

Main/Size/ID/Care Label, Plastic Button

Cut & Sewn Ladies' Tee



FABRIC

100% Linen, Jersey 180g/m²

DESCRIPTION

Ladies' Round Neck Tee

CONSTRUCTION

Overlock Stitch

TRIM

Main/Size/ID/Care Label

C&S TEE

**DIRECT
LABOR
COST**

**LESS
30%**

**TOTAL
SAVING %**

Coastline

NanChong

30%



Cut & Sewn Ladies' Tee



FABRIC

100% Cotton, Jersey 190g/m²

DESCRIPTION

Ladies' V-Neck Tee

CONSTRUCTION

Overlock Stitch

TRIM

Main/Size/ID/Care Label

Woven Ladies' Coat



FABRIC

100% Wool, Fannel 300g/m²

DESCRIPTION

Ladies' Long Sleeves Coat with Lining

CONSTRUCTION

Overlock Stitch,
Center Front with Nine Button Closure

TRIM

Main/Size/ID/Care Label,
Plastic Button

WOVEN COAT

**DIRECT
LABOR
COST**

**LESS
30%**

**TOTAL
SAVING %**

Coastline

NanChong

25%



Woven Ladies' Coat



FABRIC

96% Cotton, 4% Spandex,
Stretch Knit 410g/m²

DESCRIPTION

Ladies' Jacket with Lining

CONSTRUCTION

Fully Lining, Two Patch Pockets,
Centre Front Zipper Closure

TRIM

Main/Size/ID/Care Label

Woven Ladies' Pants



FABRIC

95% Cotton, 5% Spandex,
Stretch Twill 250g/m²

DESCRIPTION

Ladies' Pants

CONSTRUCTION

Overlock Stitch, Invisible Zipper
At Left Side Seam Closure,
Button Inside Tab, Elastic Waistband

TRIM

Main/Size/ID/Care Label,
Plastic Button

WOMEN'S PANTS

Woven Ladies' Pants



FABRIC

70% Viscose, 25% Nylon,
5% Spandex, Stretch Ponte 330g/m²

DESCRIPTION

Ladies' Front Slash Pocket Pants

CONSTRUCTION

Overlock Stitch, Zipper Fly,
Waistband with Button Closure

TRIM

Main/Size/ID/Care Label,
Plastic Button

**DIRECT
LABOR
COST**

**LESS
30%**

**TOTAL
SAVING %**

Coastline

NanChong

30%





MENS

WOVEN SHIRT
C&S TEE
C&S Polo Shirt
WOVEN COAT
WOVEN JACKET
WOVEN TROUSERS

Woven Men's Shirt



FABRIC

100% Cotton, Poplin 4oz

DESCRIPTION

Men Short Sleeves
Shirt with Pockets

CONSTRUCTION

Overlock Stitch, Patch Pockets,
Centre Front with Seven Button Closure

TRIM

Main/Size/ID/Care Label,
Plastic Button

WOVEN SHIRT

**DIRECT
LABOR
COST**

**LESS
30%**

**TOTAL
SAVING %**

Coastline

NanChong

28%



Woven Men's Shirt



FABRIC

100% Cotton Oxford

DESCRIPTION

Men Long Sleeves Shirt

CONSTRUCTION

Overlock Stitch, Patch Pockets,
Cuffs with Four Button Closure,
Centre Front with Seven Button Closure

TRIM

Main/Size/ID/Care Label,
Plastic Button

Woven Men's Trousers



FABRIC

97% Cotton, 3% Spandex,
Twill 10oz

DESCRIPTION

Men's Five Pocket Trousers

CONSTRUCTION

Overlock Stitch, Zipper Fly,
Waistband with Button Closure

TRIM

Main/Size/ID/Care Label,
Metal Zipper, Metal Button

WOVEN TROUSERS

Woven Men's Trousers



**DIRECT
LABOR
COST**

**LESS
30%**

**TOTAL
SAVING %**

30%

Coastline

NanChong

FABRIC

97% Cotton, 3% Spandex,
Twill 10oz

DESCRIPTION

Men Front Slash Pocket &
Back Welt Pockets Trousers

CONSTRUCTION

Overlock Stitch, Zipper Fly,
Waistband with Button Closure

TRIM

Main/Size/ID/Care Label,
Metal Zipper, Metal Button

Woven Men's Jacket



FABRIC

100% Nylon 60g/m²

DESCRIPTION

Men's Lined Jacket

CONSTRUCTION

Fully Lining, Welt Pockets, Front with Zipper Closure

TRIM

Main/Size/ID/Care Label, Metal Zipper

WOVEN JACKET/COAT

DIRECT LABOR COST

LESS 30%

TOTAL SAVING %

Coastline

NanChong

25%



Woven Men's Coat



FABRIC

100% Wool, Fannel 300g/m²

DESCRIPTION

Men's Lined Coat

CONSTRUCTION

Fully Lining, Patch Pockets, Five Button Front Closure

TRIM

Main/Size/ID/Care Label, Plastic Button

C&S Men's T-Shirt



FABRIC

100% Cotton, Jersey 190g/m²

DESCRIPTION

Men's V-neck, Crew neck T-Shirt

CONSTRUCTION

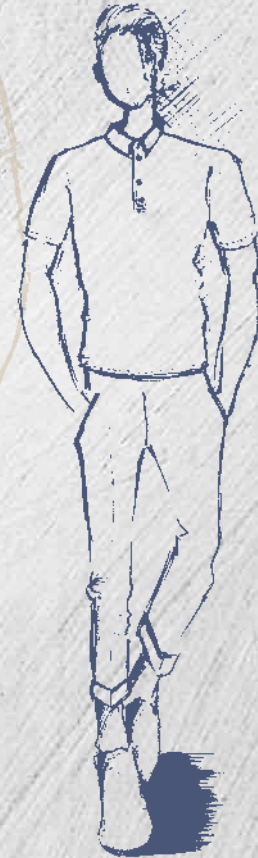
Overlock Stitch

TRIM

Main/Size/ID/Care Label

C&S T-SHIRT / POLO SHIRT

C&S Men's Polo Shirt



DIRECT LABOR COST

LESS 30%

TOTAL SAVING %

Coastline

NanChong

30%



FABRIC

100% Linen, Jersey 180g/m²

DESCRIPTION

Men's Polo Short Sleeves Shirt

CONSTRUCTION

Overlock Stitch, Front Placket with Two Button Closure

TRIM

Main/Size/ID/Care Label, Plastic Button

CONTACT US



Hong Kong Head Office

Profits Fund Global Holding Ltd.

23/F., Tower 1, Ever Gain Plaza, 88 Container Port Road, Kwai Chung, NT., Hong Kong

TEL: +(852) 2480 8300 +(852) 2741 3712

EMAIL: profitsfund@pfghl.com

WEBSITE: <http://www.pfghl.com/>



China Representative Office

Zhuhai Office.

No.3 Fan Rong Road, Qin Shi Industrial District, Sanzao
Scientific and Technological Industrial Park, Zhuhai, PRC

TEL: +(86) 756-7515 188 +(86) 756-7622 231